

KENWOOD

Document Copyrights

Copyright 2006 by Kenwood Corporation. All rights reserved.

No part of this manual may be reproduced, translated, distributed, or transmitted in any form or by any means, electronic, mechanical, photocopying, recording, or otherwise, for any purpose without the prior written permission of Kenwood.

Disclaimer

While every precaution has been taken in the preparation of this manual, Kenwood assumes no responsibility for errors or omissions. Neither is any liability assumed for damages resulting from the use of the information contained herein. Kenwood reserves the right to make changes to any products herein at any time for improvement purposes.

RAPID CHARGER

KSC-25

SERVICE MANUAL

REVISED

KENWOOD

© 2002-5 PRINTED IN JAPAN
B51-8626-10 (N) 1385

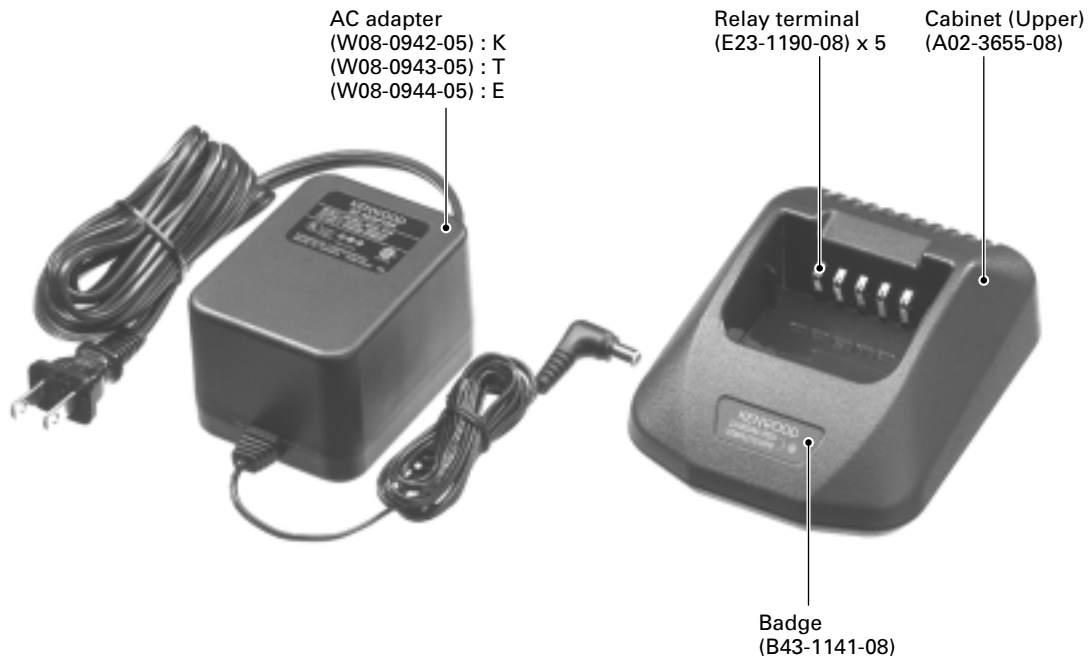


Photo is K type.

PARTS LIST

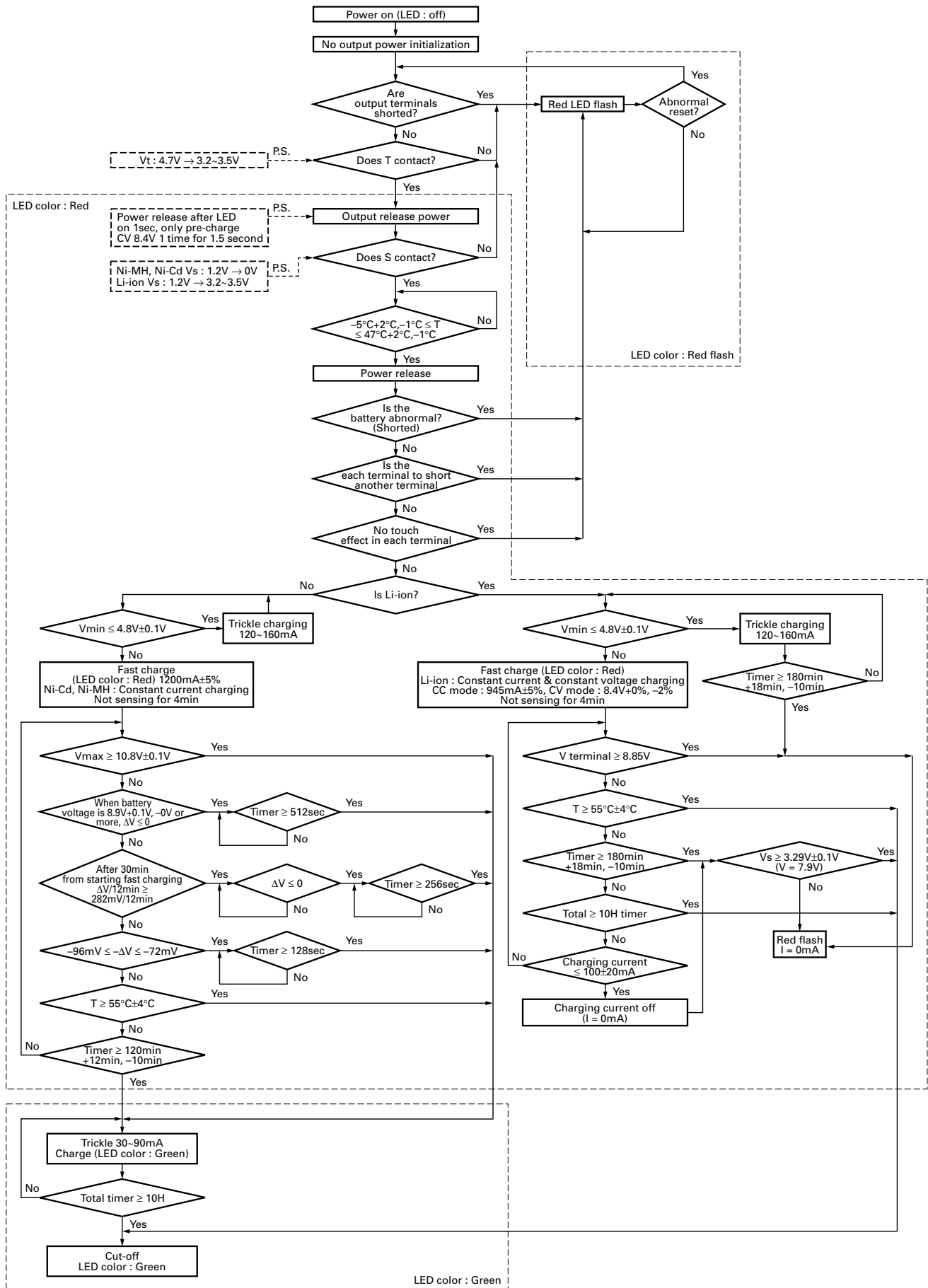
KSC-25 (Y56-513X-XX)

* New Parts

△ Safety critical components

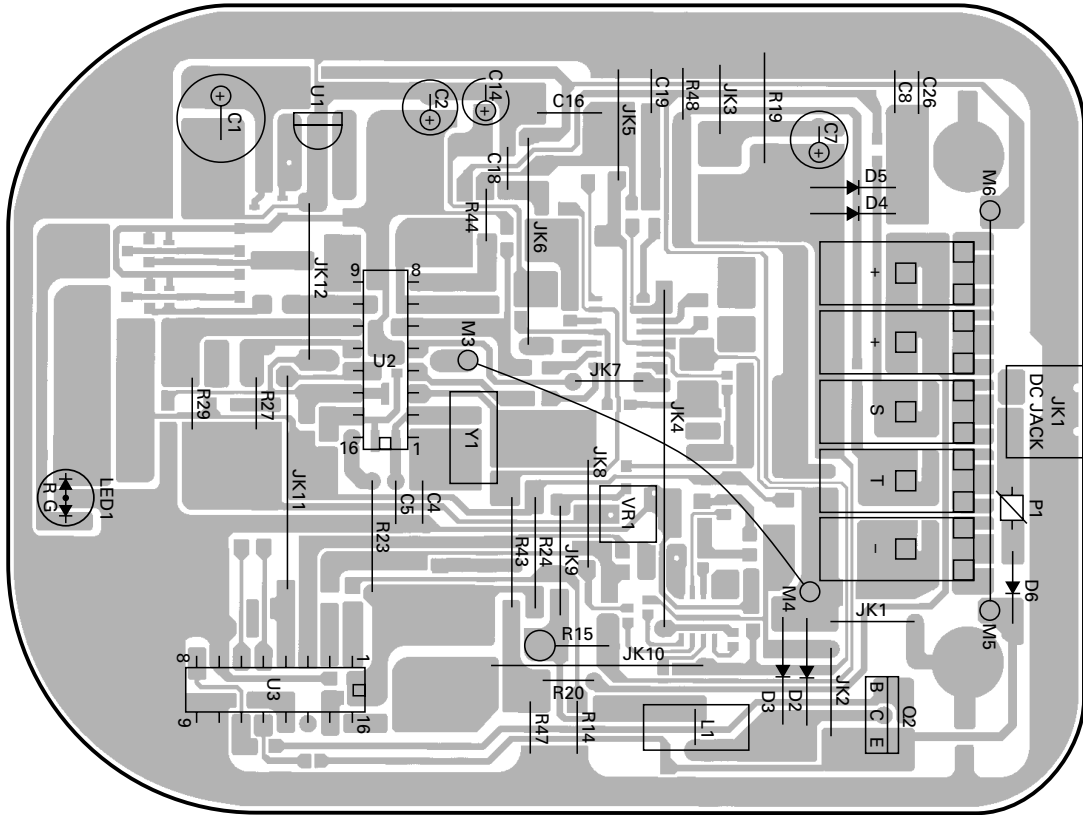
Ref. No.	Address	New parts	Parts No.	Description	Destination
			A02-3655-08	Cabinet Upper	
			A02-3656-08	Cabinet Bottom	
			B43-1141-08	Badge	
		*	B62-1607-10	Instruction manual	K,T
		*	B62-1608-00	Instruction manual	E
			E03-0200-08	DC jack	
			E23-1190-08	Relay terminal	
			G13-1547-08	Cushion	
			N83-2610-45	Screw	
△			W08-0942-05	AC adapter 120VAC 60Hz	K
△		*	W08-0943-05	AC adapter 230VAC 50Hz	T
△		*	W08-0944-05	AC adapter 230VAC 50Hz	E

CHARGER FLOW CHART

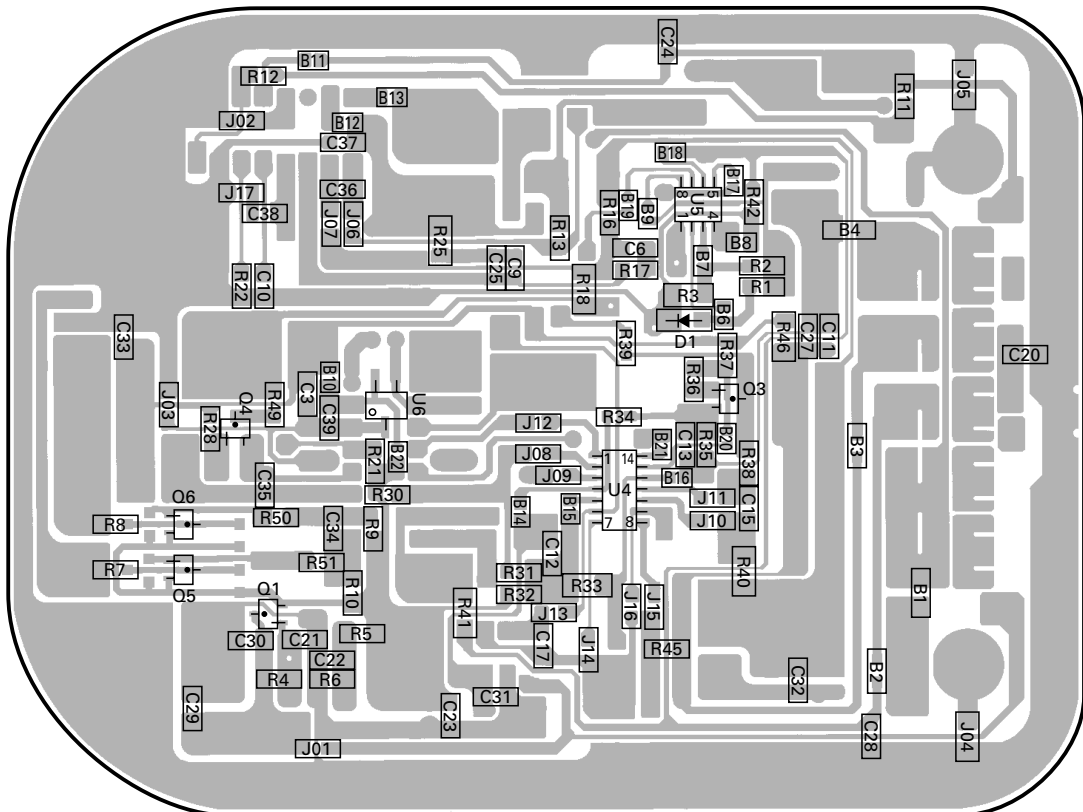


PC BOARD VIEWS

CHARGER UNIT Component side view



CHARGER UNIT Foil side view



BATTERY PACK

KNB-24L (Li-ion Battery Pack)

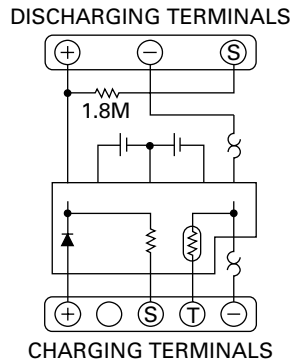
External View



Specifications

Voltage 7.4V (3.7V x 2)
 Battery capacity 1400mAh

Schematic Diagram



KNB-26N (Ni-MH Battery Pack)

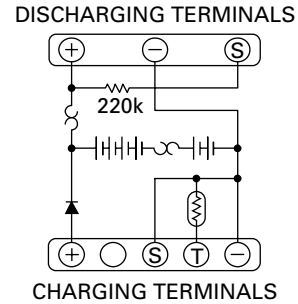
External View



Specifications

Voltage 7.2V (1.2V x 6)
 Battery capacity 2000mAh

Schematic Diagram



KNB-25A (Ni-Cd Battery Pack)

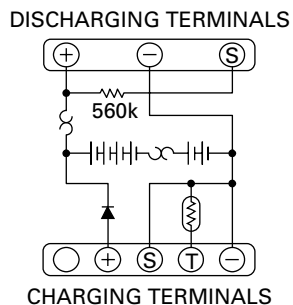
External View



Specifications

Voltage 7.2V (1.2V x 6)
 Battery capacity 1200mAh

Schematic Diagram



SPECIFICATIONS

Charging Current	KNB-25A, KNB-26N : 1200mA±5%
	KNB-24L : 945mA±5%
Charging Time	KNB-24L : Approx. 150 minutes
	KNB-25A : Approx. 60 minutes
	KNB-26N : Approx. 100 minutes
Dimensions (Charger only)	2-11/64 in (55 mm) H x 4-1/8 in (105 mm) W x 5-5/16 in (135 mm) D
Weight (Charger only)	Approx. 170g / 6.0oz

KENWOOD CORPORATION

14-6, Dogenzaka 1-chome, Shibuya-ku, Tokyo 150-8501, Japan

KENWOOD SERVICE CORPORATION

P.O. BOX 22745, 2201 East Dominguez Street, Long Beach, CA 90801-5745, U.S.A.

KENWOOD ELECTRONICS CANADA INC.

6070 Kestrel Road, Mississauga, Ontario, Canada L5T 1S8

KENWOOD ELECTRONICS DEUTSCHLAND GMBH

Rembrücker Str. 15, 63150 Heusenstamm, Germany

KENWOOD ELECTRONICS BELGIUM N.V.

Leuvensesteenweg 248 J, 1800 Vilvoorde, Belgium

KENWOOD ELECTRONICS FRANCE S.A.

13, Boulevard Ney, 75018 Paris, France

KENWOOD ELECTRONICS U.K. LIMITED

KENWOOD House, Dwight Road, Watford, Herts., WD1 8EB United Kingdom

KENWOOD ELECTRONICS EUROPE B.V.

Amsterdamseweg 37, 1422 AC Uithoorn, The Netherlands

KENWOOD ELECTRONICS ITALIA S.p.A.

Via G. Sirtori, 7/9 20129 Milano, Italy

KENWOOD IBERICA S.A.

Bolivia, 239-08020 Barcelona, Spain

KENWOOD ELECTRONICS AUSTRALIA PTY. LTD.

(A.C.N. 001 499 074)
16 Giffnock Avenue, Centrecourt Estate, North Ryde, N.S.W. 2113 Australia

KENWOOD ELECTRONICS (HONG KONG) LTD.

Unit 3712-3724, Level 37, Tower one Metroplaza, 223 Hing Fong Road, Kwai Fong, N.T., Hong Kong

KENWOOD ELECTRONICS TECHNOLOGIES(S) PTE LTD.

Sales Marketing Division
1 Ang Mo Kio Street 63, Singapore 569110

